

## 1924 Portland Tax Records: 77-79 Winter Street, Portland, 1924

79  
Wint.

Surveyed by Mark Owen Jones

(Remarks on other Side)

125 - 1177/77 - S 8000 + 24

### Remarks about Buildings

$$\begin{array}{r}
 16.5 \times 26 = 429 \quad 29 = 12441 \\
 16.5 \times 13 = 215 \quad 23 = 7095 \\
 14 \times 5.5 = 77 \quad 10 = 1232 \\
 14 \times 5.5 = 77 \quad 16 = 1232 \\
 18.13 \times 25.5 = 644 \quad 16 = 10304 \\
 \hline
 1442 \checkmark \qquad \qquad 32304 \checkmark
 \end{array}$$

### Remarks about Land

WINTER ST.

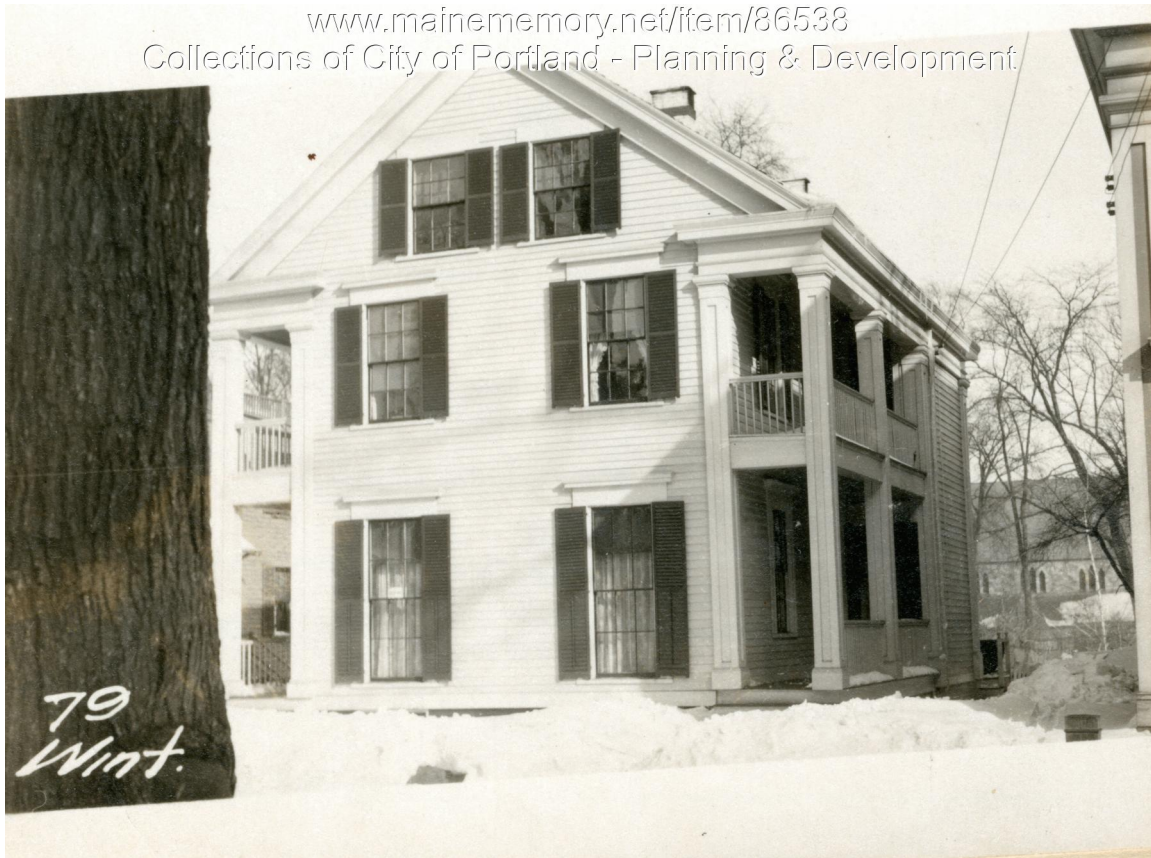
### Remarks about Personal Property

CITY OF PORTLAND, MAINE ASSESSORS DEPARTMENT	
CHART	BLOCK
3 Building Volumns Checked	NEW BRIDGE
4 Building Values Placed	100
5 Building Values Extended	
6 Land Only Questionaire Made	
7 Land Values Placed	
8 Land Values Extended	
9 Compared With 1923	
10 Personal Property Added	

1924 Portland Tax Records: 77-79 Winter Street, Portland, 1924

[www.maine-memory.net/item/86538](http://www.maine-memory.net/item/86538)

Collections of City of Portland - Planning & Development



**Owner:** Alice I Pinkham  
**Address:** 77-79 Winter Street, Portland, Maine  
**Use:** Dwelling - Two family  
**Local Code:** Block 45C Lot 16 Book 83A Page 1  
**MMN item number:** 86538  
**Notes:** Subsequently owned by James Trawell