

1924 Portland Tax Records: Dwelling, Waldo Street, Portland, 1924

L400+  
B900+

Port land, Maine  
Assessment 1924  
Name Watts Emma E Hrs  
Owner Watts Emma E Hrs  
Street Waldo No. 1735  
Block 1735 Lot 1735  
Use of Bldg. Dwelling Name Watts Emma E Hrs  
Tenants and Rooms one family - 8 rooms  
Rentals occupied by owner  
Age 127 years  
Condition of Repair Fair

<b>Class</b> Bungalow Single House Two family Three family Apartment Store Building Office " Factory " Storage " Stables Garage, private Garage, public Theatre Club House Cottage	<b>Exterior</b> Clapboards Siding Shingles Stucco Paper Tapestry Brick Com. Brick Galv. Iron Stone Terra Cotta Concrete  Heating Stove Furnace Hot Water Steam  Light Oil Gas Electric  Floor Common Hardwood Re-Concrete Concrete Slab Waterproof  Ceiling Plaster Metal Panelled Rough	<b>Plumbing</b> Common Individual Open Set tubs  Finish Plain Hardwood  Halls Wood Terrazzo Marble  Roof - Roofing Shingle Slate Gravel Prepared Asbestos Flat Hip Gable Dormers  Windows Plain Glass Wire Glass Shutters  Miscellaneous Elevator Sprinkler Fire Escape Refrigerator Vacuum Cleaner Safes and Vaults Telephone Equip.
---------------------------------------------------------------------------------------------------------------------------------------------------------------------------------------------------------------------------------	---------------------------------------------------------------------------------------------------------------------------------------------------------------------------------------------------------------------------------------------------------------------------------------------------------------------------------------------------------------------------------------------------	---------------------------------------------------------------------------------------------------------------------------------------------------------------------------------------------------------------------------------------------------------------------------------------------------------------------------------------------------------------------------------------------------------------------------------------------------------

Foundation  
Brick  
Stone  
Concrete  
Pile  
Granite blocks  
Basement  
Full  
Cement Floor  
Waterproof  
Dirt  
Construction  
Frame  
Brick  
Tile  
Blocks  
Stucco  
Re-Concrete  
Mill  
Steel Frame

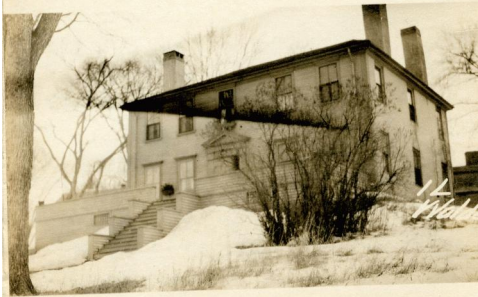
Ground Area 1423 sq ft Height 27' 9"  
Cubic Feet 38424 cts. Unit 1735  
Utility Dep. 75 Per cent. 1729  
Dep. 75 Per cent. 1729  
Sound Value, \$ 1729

Land 3/4 A. Corner Interior Alley  
Front Depth = ft.  
COMPUTATION

8' 1000  
B 1700

Area	Multiplier	Coefficient	
Year	Unit	Coefficient	Land Value
19			S

Surveyed by J. J. Casey  
JUN 7 1924  
(Remarks on other Side)



Remarks about Buildings

46' 10"

41' 3"

34' 6"

27'

41' 9"

brick → ← brick

2 sides are of brick const. + brick ext.  
front + back are of frame const. + clap-board ext.  
dotted represents piazza 3 1/2 feet above ground

Remarks about Land

41.25 x 34.5 = 1423.125 x 27 = 38424.375

Remarks about Personal Property

CITY OF PORTLAND, MAINE	
ASSESSORS DEPARTMENT	
CHART	BLOCK
3	Building Volumes Checked
4	Building Values Placed
5	Building Values Extended
6	Land Only Questionnaire Made
7	Land Values Placed
8	Land Values Extended
9	Compared With 1923
10	Personal Property Added

1924 Portland Tax Records: Dwelling, Waldo Street, Portland, 1924

[www.maine-memory.net/item/85848](http://www.maine-memory.net/item/85848)

Collections of City of Portland - Planning & Development



**Owner:** Heirs of Emma E. Watts  
**Address:** Waldo Street, Stroudwater, Portland, Maine  
**Use:** Dwelling - Single family  
**Local Code:** Block 1L Lot 1 Book 77 Page 1  
**MMN item number:** 85848